

1301 VIRGINIA DRIVE

Maplewood 2 | Fort Washington, PA



Maplewood Office Park

FULL TOP FLOOR AVAILABLE

1300 & 1301 Virginia Drive
is situated just off the
Pennsylvania Turnpike
in Fort Washington



Building signage opportunity

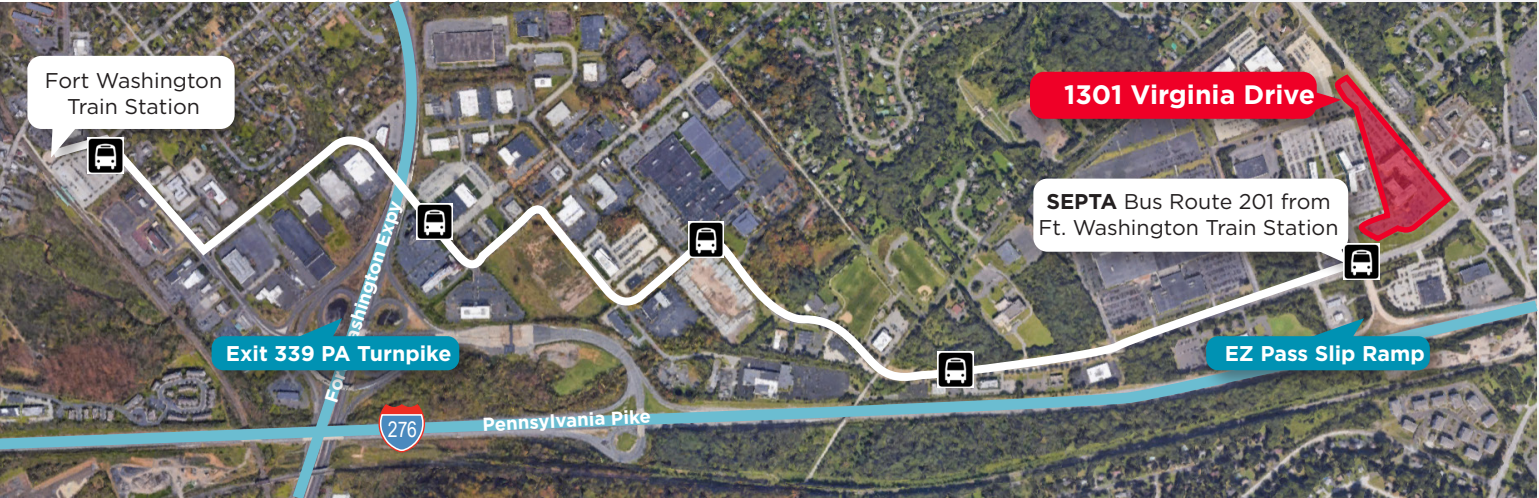
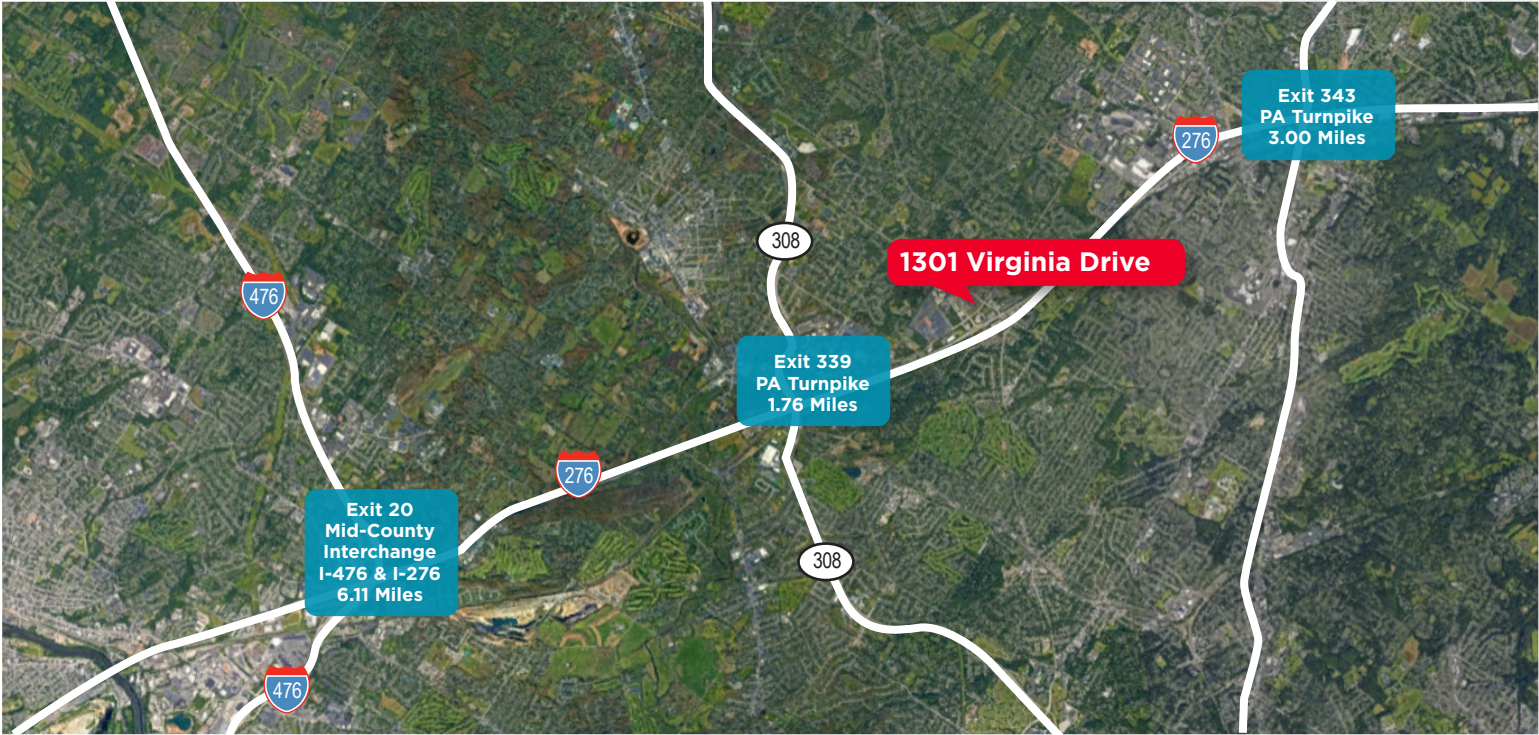
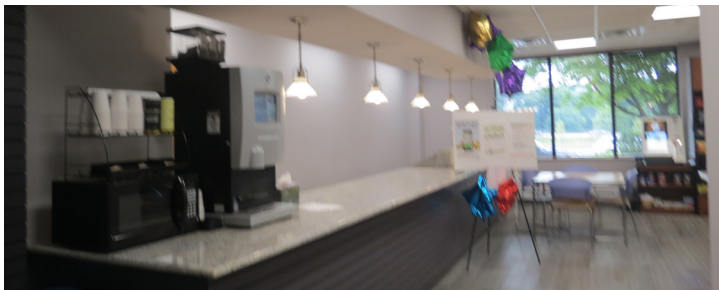
500
surface
parking
spaces

Welcome to 1301 Virginia Drive

- Four-story office building containing 29,625 SF available for lease
- Attractive entrance lobby with polished marble and flame-cut granite
- Loading dock
- High bandwidth fiber optics – Verizon, Comcast Business Services
- Café located in the 1300 Building
- 500 surface parking spaces
- Area amenities include restaurants, hotels, banking and public transportation

Availabilities

1st Floor	Fully Leased
2nd Floor	+/- 3,500 SF
3rd Floor	Fully Leased
4th Floor	26,125 SF



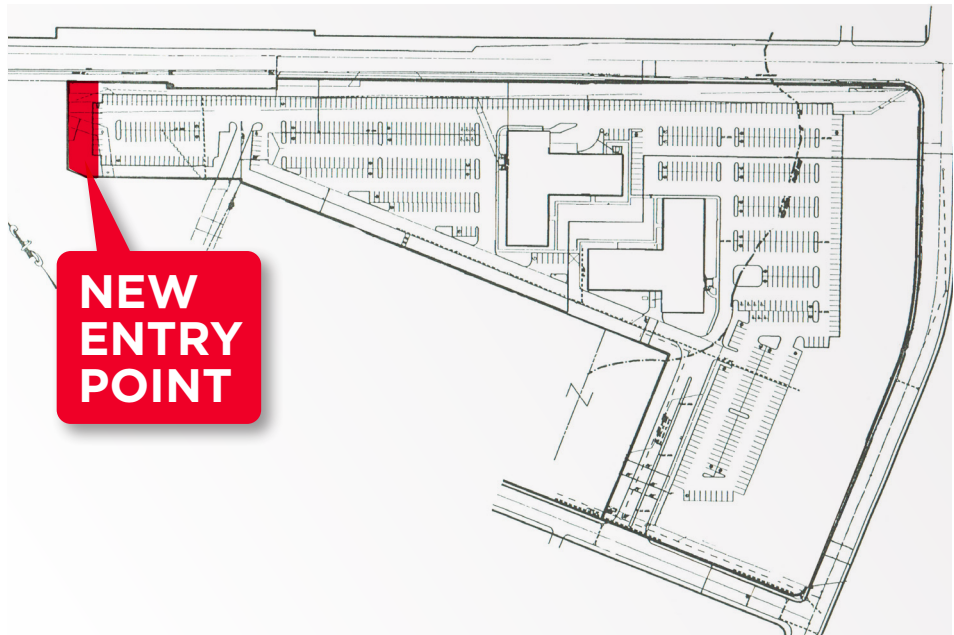
Amenities Map



Convenient access to Turnpike and public transportation

Direct access to the Pennsylvania Turnpike (adjacent to EZ Pass slip ramp), Route 309, SEPTA's Fort Washington Rail Service and bus service Route 201

www.1301virginiadrive.cushwakesites.com/



JOHN C. SHELLY
Senior Director
+1 610 772 2012

John.Shelly@cushwake.com

GINA M. BRENNAN
Director
+1 610 772 2013

Gina.Brennan@cushwake.com

CUSHMAN & WAKEFIELD
OF PENNSYLVANIA, LLC

Two Tower Bridge
1 Fayette Street, Suite 125
Conshohocken, PA 19428