

FOR LEASE

# 2325 MARYLAND ROAD

WILLOW GROVE, PA



EFFICIENT FLOOR PLATES IDEAL FOR OPEN OFFICE ENVIRONMENT

## PROPERTY HIGHLIGHTS



1,650 SF - 10,600 SF available  
(10,600 SF contiguous)



4.10/1,000 SF parking ratio



35,100 SF, 2-story Class A office building  
with 17,550 SF typical floor plates



1-1/2 miles from the Willow Grove  
SEPTA Regional Rail (Bus Route 310  
stops at station)



Built 1987



SEPTA Bus Routes 80 & 310 stop  
at the corner of Blair Mill Road and  
Witmer Road



Competitive asking rent



1/2 mile from Exit 343 of the  
Pennsylvania Turnpike



Great signage opportunity on Witmer  
Road



Shopping, hotels, restaurants,  
banking, and other amenities nearby

FOR MORE INFORMATION, CONTACT:

RICHARD F. SMITH, JR., SIOR  
1300 Virginia Drive, Suite 140, Fort Washington, PA 19034  
rsmith@avirgroup.com  
Office +1 215 628 0403  
Mobile +1 215 669 0507

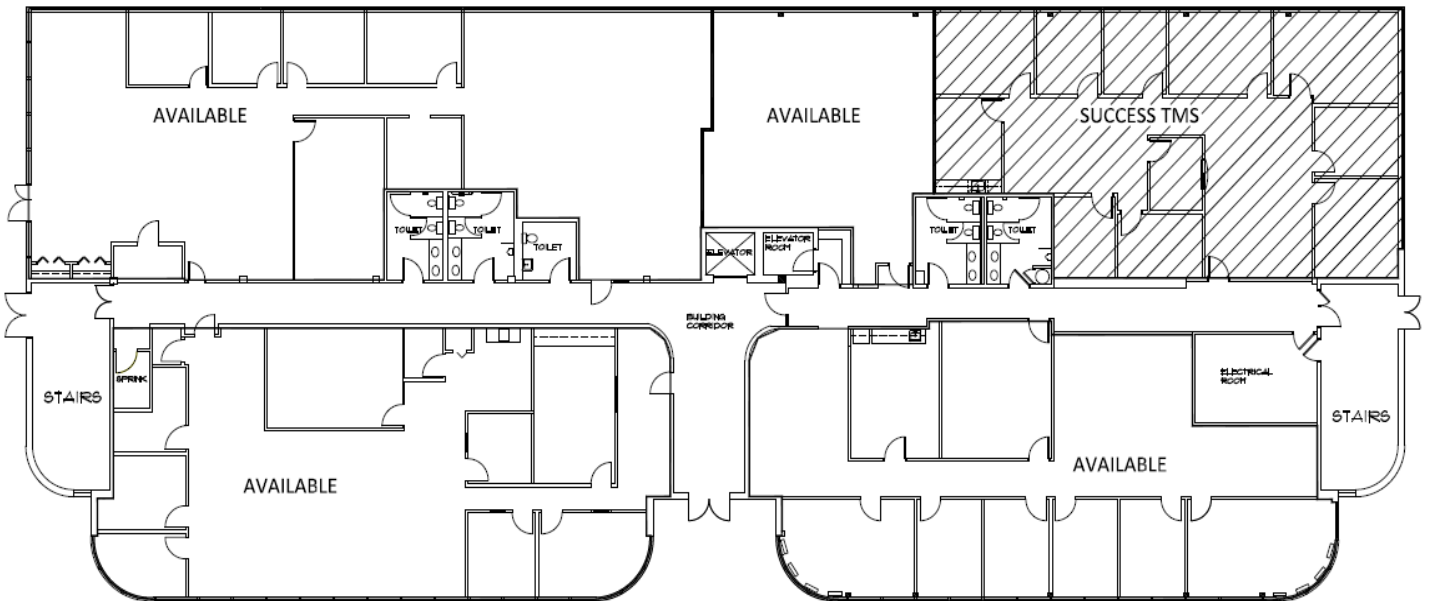
**avir**  
REALTY GROUP

[www.avirgroup.com](http://www.avirgroup.com)



OPEN

# FLOOR PLAN



No warranty or representation, expressed or implied, is made as to the accuracy of the information contained herein, and same is submitted subject to errors, omissions, change of price, rental or other conditions, withdrawal without notice, and to any special listing conditions, imposed by our principals.