

1008 ASTORIA BLVD









CHERRY HILL, NJ

FOR LEASE



MIXED-USE INDUSTRIAL PARK IN THE HEART OF CHERRY HILL, NEW JERSEY

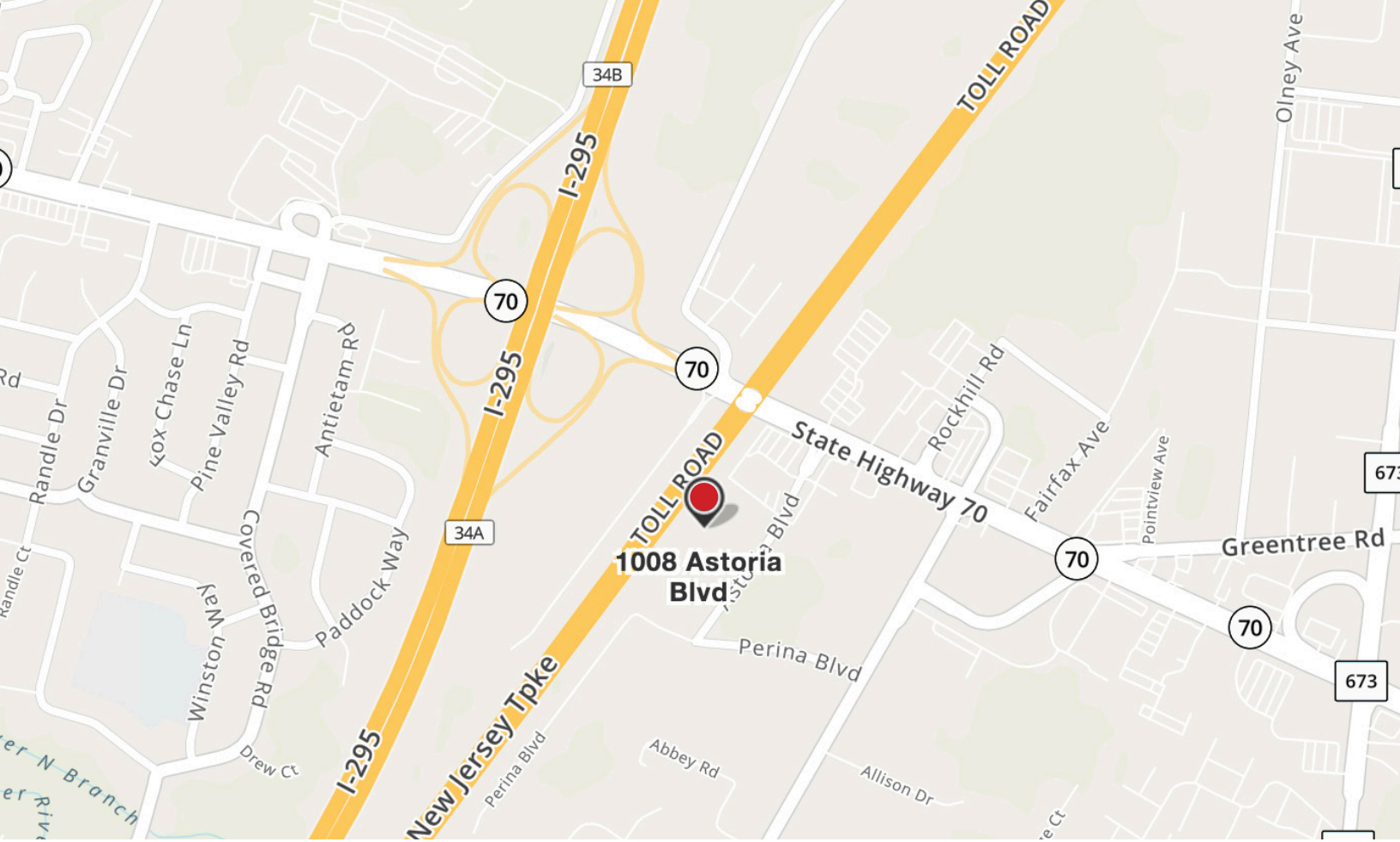
PROPERTY HIGHLIGHTS

-  Building Square Footage – 37,500 Square Feet
-  Space Available – 3750 - 8400 Square Feet
-  Ceiling Height – 18'
-  Loading – Tailgate & Drive-in Loading Doors
-  Parking – 3 spaces per 1000 Square Feet
-  Column & Bay Depth – Column Spacing: 40' Bay Depth: 120'
-  Fire & Life Safety – Wet sprinkler System, Centrally Monitored
-  Location – Located just off Route 70 in Cherry Hill, minutes from I-295, the New Jersey Turnpike and area bridges into Philadelphia.

FOR MORE INFORMATION, CONTACT:

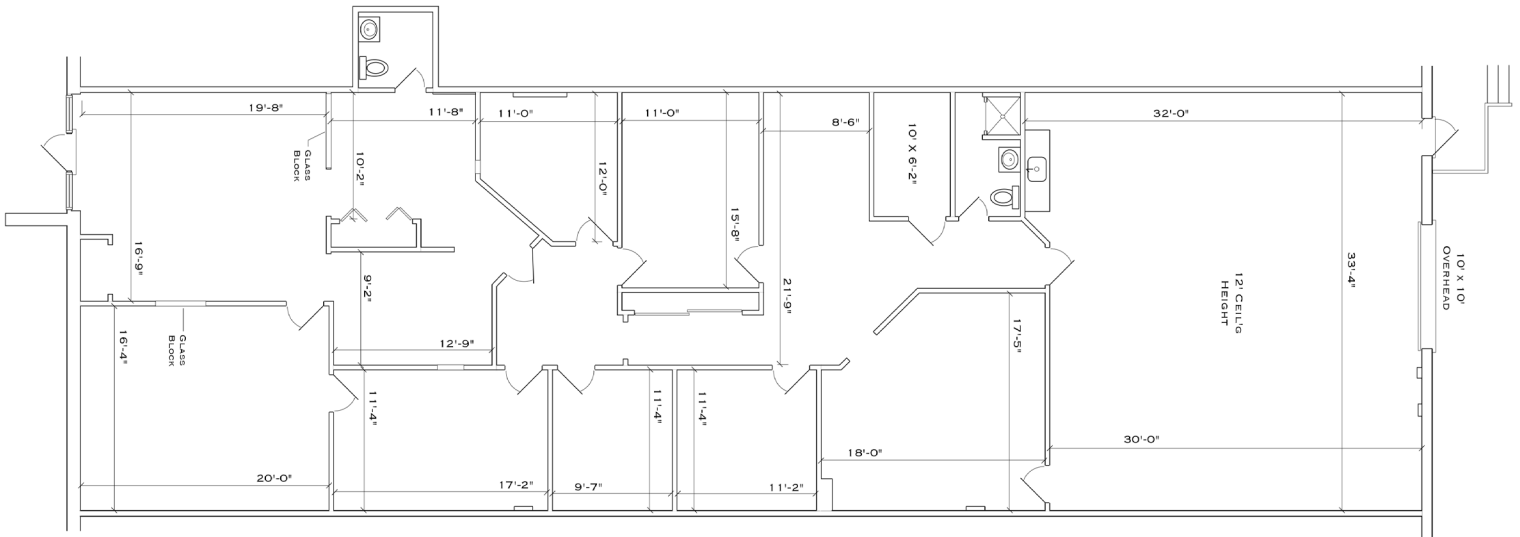
RICHARD F. SMITH, JR., SIOR
1300 Virginia Drive, Suite 140, Fort Washington, PA 19034
rsmith@avirgroup.com
Office +1 215 628 0403
Mobile +1 215 669 0507

avir
REALTY GROUP
www.avirgroup.com



OPEN

FLOOR PLAN



No warranty or representation, expressed or implied, is made as to the accuracy of the information contained herein, and same is submitted subject to errors, omissions, change of price, rental or other conditions, withdrawal without notice, and to any special listing conditions, imposed by our principals.